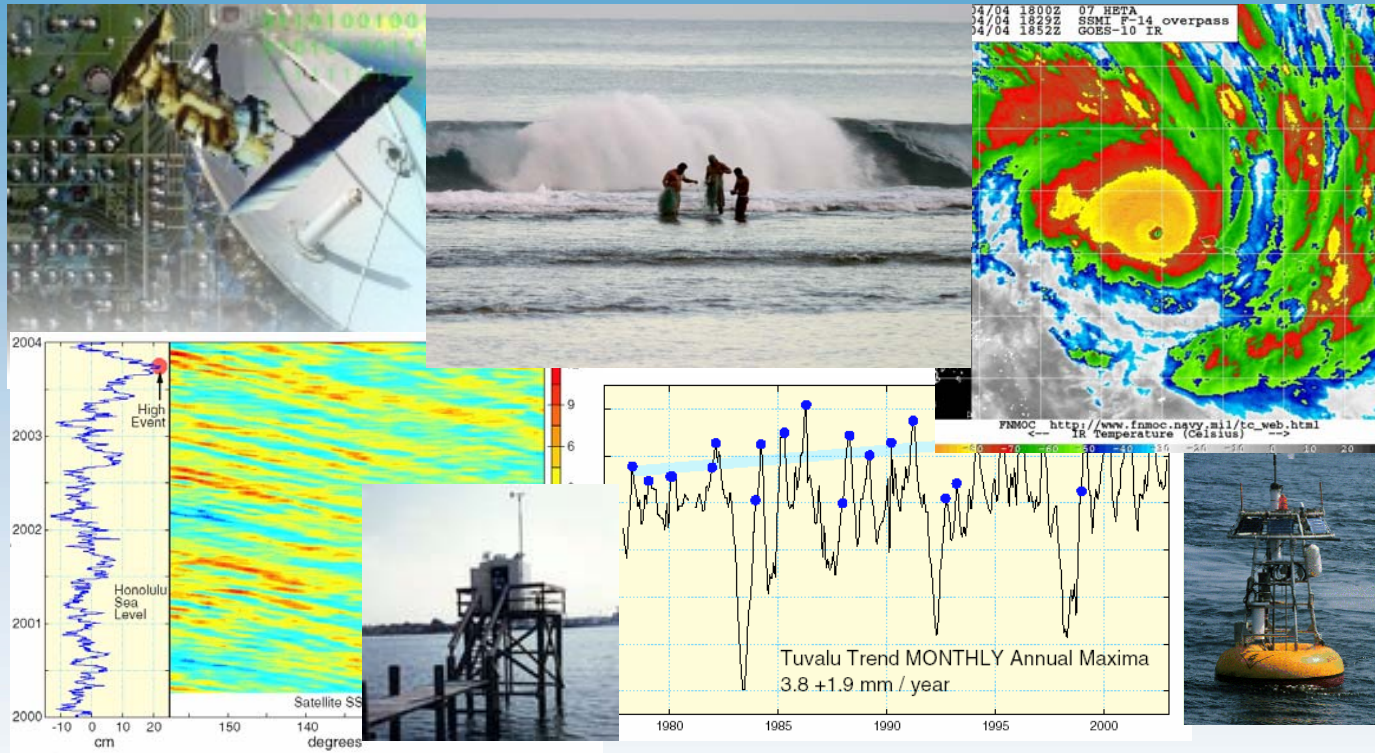


PRICIP

Pacific Region Integrated Climatology Information Products



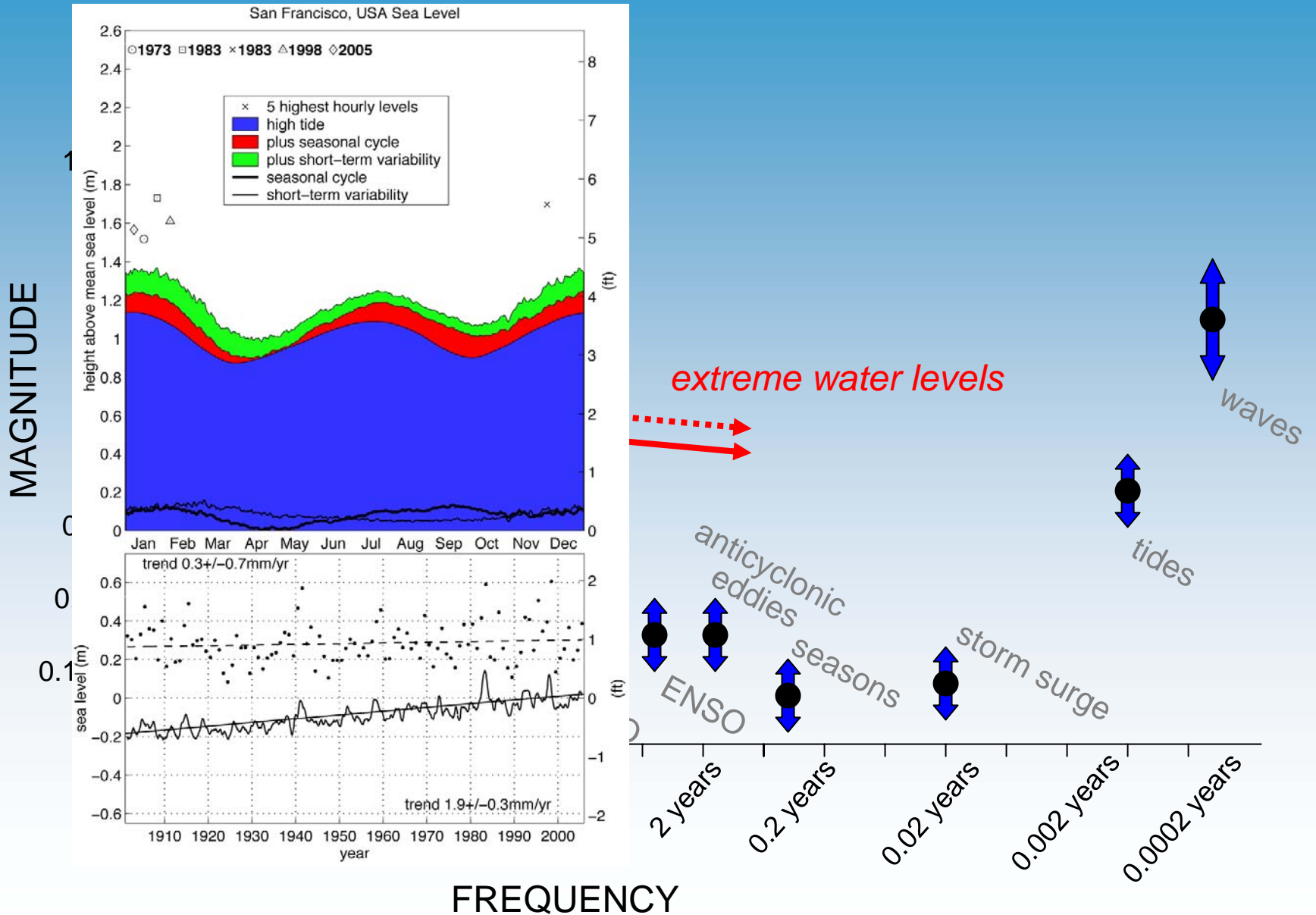
Expert Teams Project Planning Workshop
HIGH SEAS REPORT OUT

June 20-21, 2006



San Francisco, CA

Water Level Signature – Honolulu, HI



Waves and Water Level Data/Product Typology

Systems

Tier 0 – station/platform information

(e.g., station location description, instrument specifications)

Data

by system

Tier 1 – “raw” data

(e.g., real time or near real time elevation time series)

Tier 2 – “archived” data

(e.g., QA/QC'd historical elevation time series)

environmental
models...

Products

by process
and
time frame

Tier 3 – “derived” products

(e.g., plot of observed versus predicted tides with residuals)

Tier 4 – “applied” products

(e.g., plot of total water level return intervals based on GEV analysis)

socioeconomic
models...

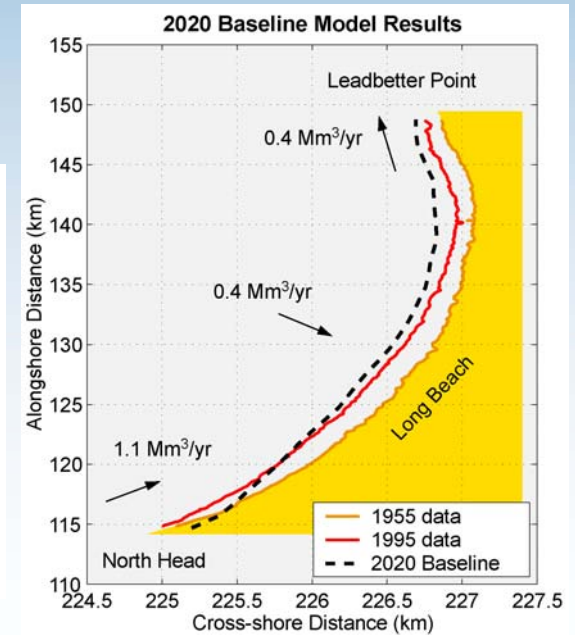
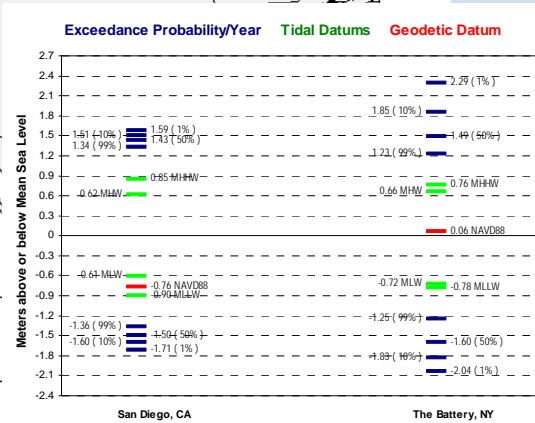
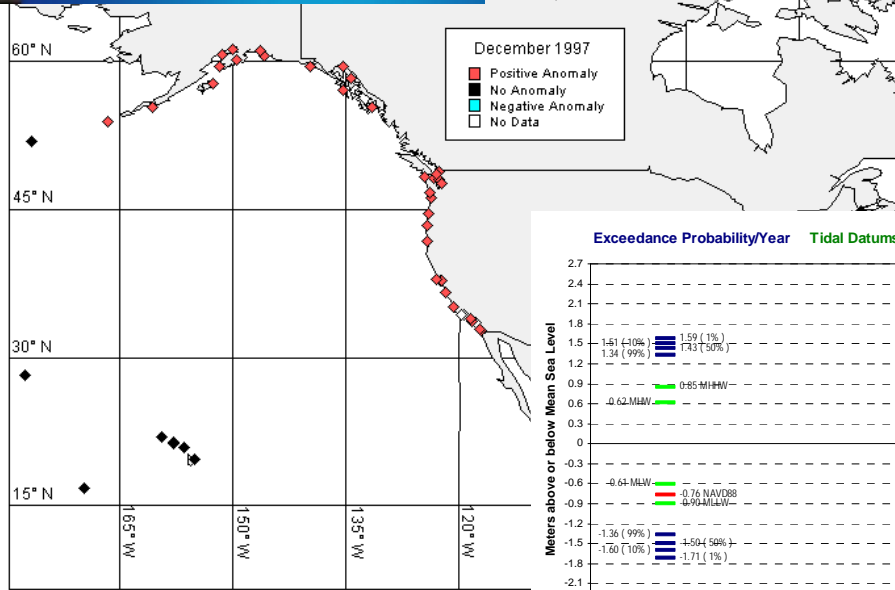
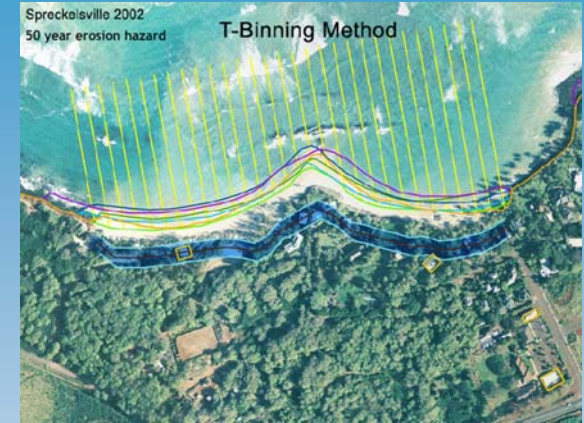
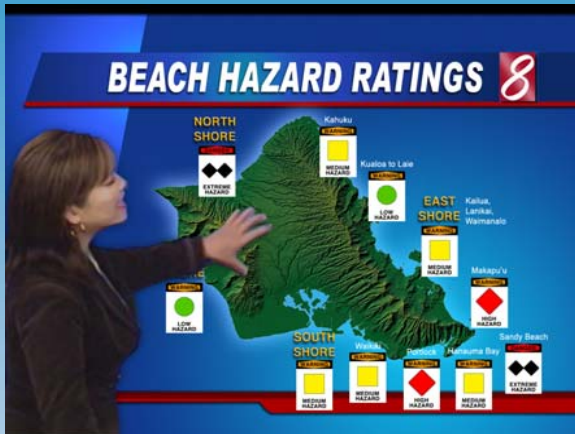
by use sector

Tier 5 – “tailored” products

(e.g., flood insurance rate map)

Tier 6 – “culturally-sensitive” products

Tier 5 – “tailored” products



Tier 5 – “tailored” products

Friday, February 25, 2005 3:00:00 PM
 Wave Height: 6.2 feet
 Wave Period: 13 seconds
 Tide Height: 8.43 feet

Auala (Tool) e Iloilo ai A'afiaga Matuia o le Tau i Tutuila
Fa'amalosia o le Fa'avae mo Fuafua o A'afiaga Matuia o le Tau i Amerika Samoa

tuaiga eseese o a'afiaga mata'utia faa-natura e aofia ai galulolo (tsunami), mafui'e, solo, ma la mala. O itu mata'utia nei e masani ona fa'atama'ia ai ma maumauina ai le ola i ni isi taimi. E ui ina e le mafai ona fa'atulafono, tulaga mata'utia o le tau, ae mafai e vaega a le malo ona fa'atino...

Map Output - Microsoft Internet Explorer
 Address: <http://ekman.csc.noaa.gov/website/asvhat/blankPrint.htm>

Tutuila Hazard Assessment Tool

Legend

- Tutuila Shoreline
- Village
- Road
- Building
- Tsunami Risk**
 - High
 - Medium
 - Low
 - Tutuila

Alao

NOAA Coastal Services Center

664 Feet

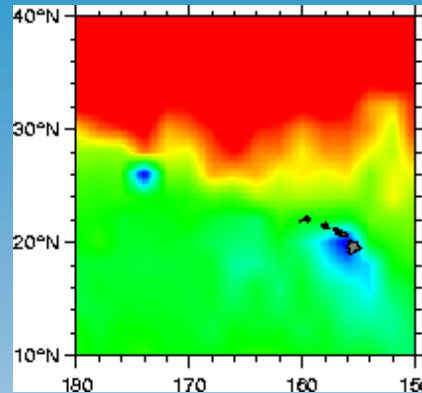
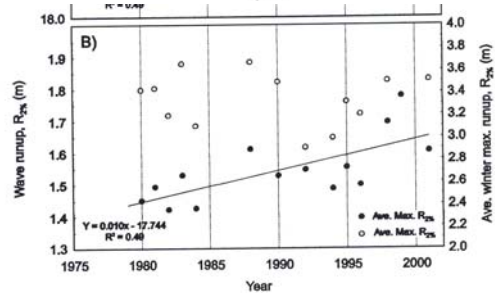
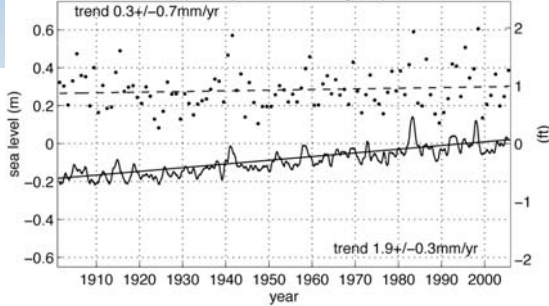
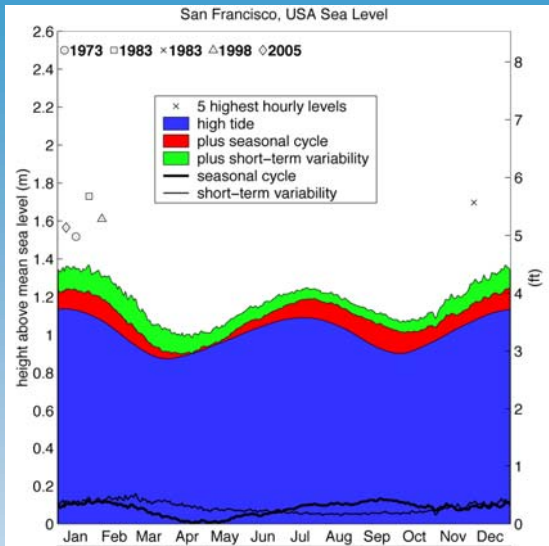
Tsunami Risk = High

This site is located in an area where tsunami inundation is probable.

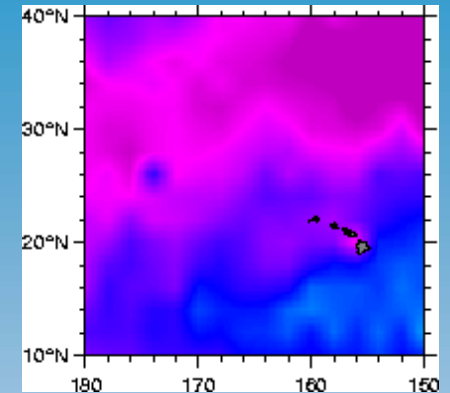
vaega lava o le nuu ma la oia mai ai faamatataga o loo e mana'omia ma le ituaiga (galulolo, mafui'e etc.) i le faafanua.

www.csc.noaa.gov/t_hat http://ashazards.doc.asg.as/t

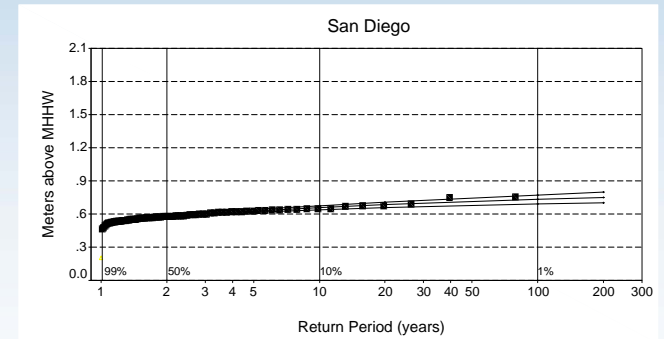
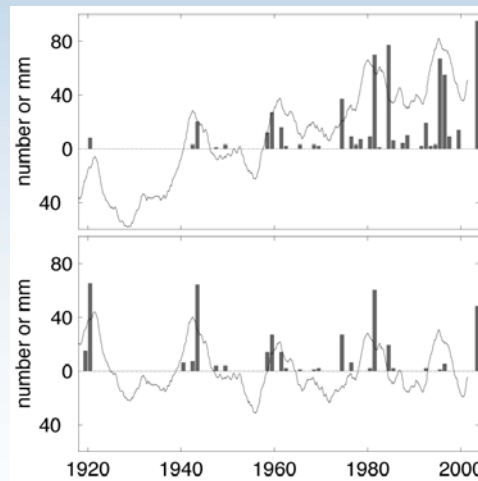
Tier 4 – “applied” products



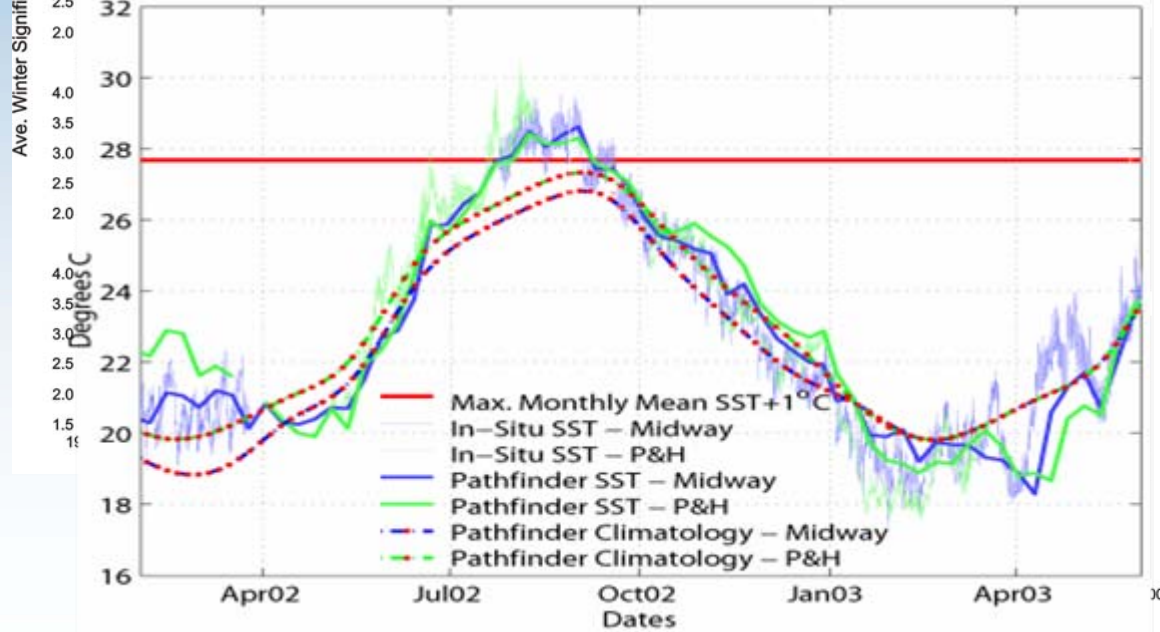
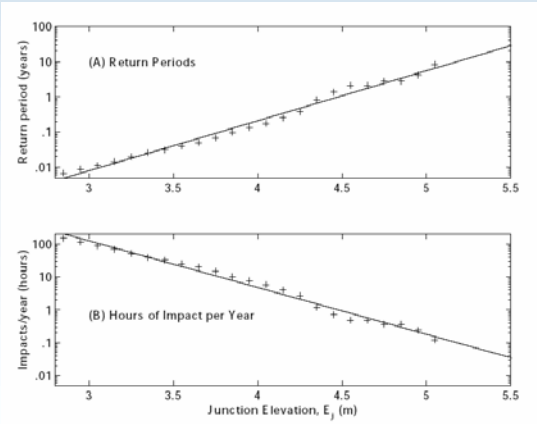
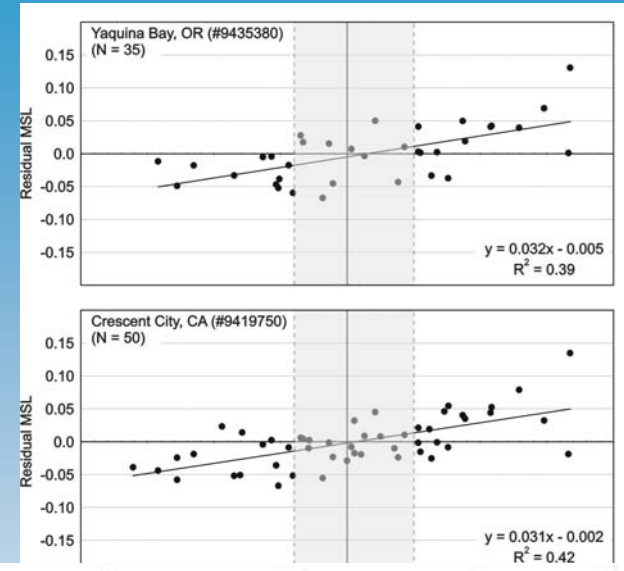
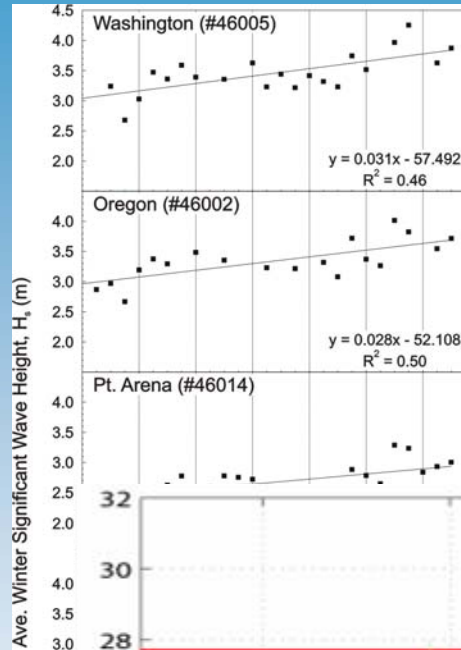
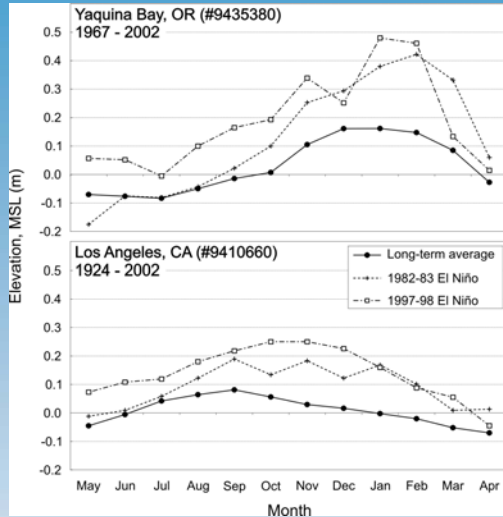
Winter



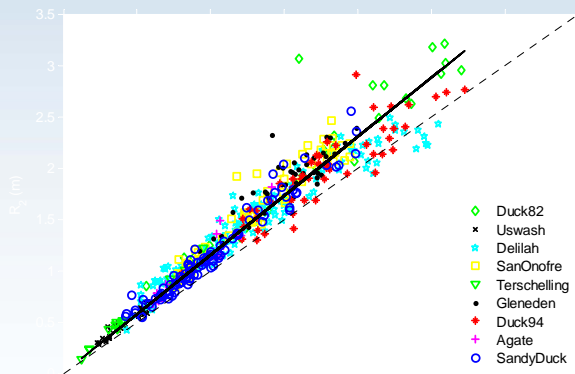
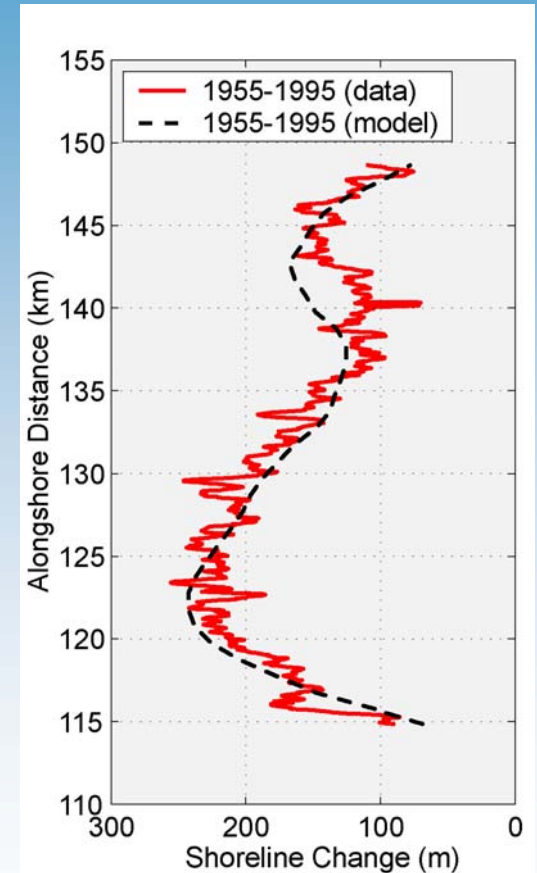
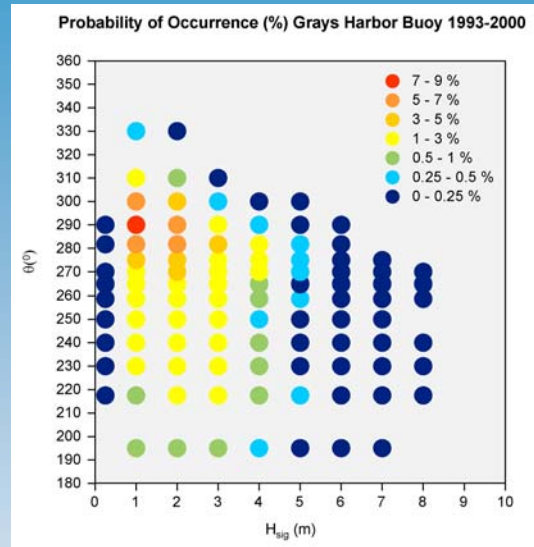
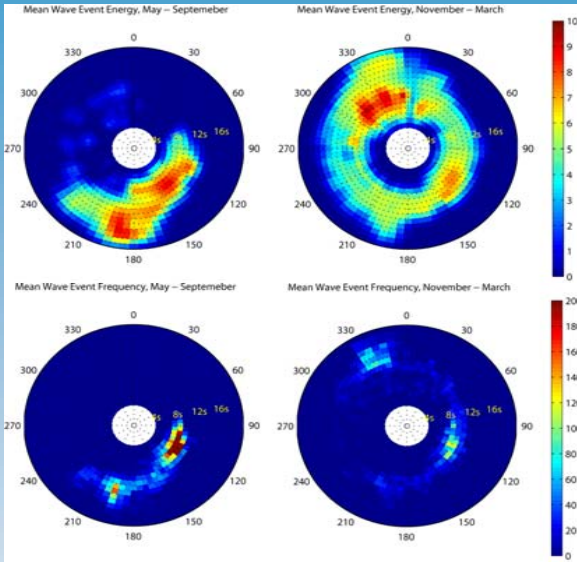
Summer



Tier 4 – “applied” products



Tier 4 – “applied” products



Regions proposed include:

Honolulu, Hawaii – chosen because of importance of waves, availability of data and integration of

Guam – 4 years of in situ wave data, tide station, applicability of coral reef

Oregon – chosen to be a refinement of existing CSC product

Homer, Alaska – availability of data, leveraging of other current projects

American Samoa

California

User Requirements Feedback:
Crisis mode decision making – need forecasts with range of conditions defined
Can accept variation in forecasts, if educated
Local Scale of information
Needs to be kept updated, example: Lidar data